



WIRELESS 2000 Annunciator System

TC-10U DOOR/WINDOW TRANSMITTER

TC-10U INSTALLATION INSTRUCTIONS

Please read this manual carefully before installation.

FEATURES

- Compatible with RC-20U(Chime Box W/Relay), TR-20U(Repeater) and also compatible with any receiver/ repeater of WIRELESS1000 series.
- Can be installed on Door/ Window.
- Weather proof structure (IP54) for indoor and outdoor applications. Do not expose directly to rain.
- Over 8 million codes possible to eliminate interference from neighbors.
- Powered by CR123 3V lithium battery (not included).
- Supervised low battery.
- Two unique functions; the first is for its built-in magnet switch and the second is input terminal for the OPTEx's battery operated detectors.

① CAUTION

1. Outdoor Use

The TC-10U Transmitter is suitable for both indoor and outdoor use, being careful not to expose directly to rain.

2. Harsh environment.

Do not use the TC-10U under severe conditions such as high temperatures, rapid temperature change, high humidity, steam or smoke. This may cause the unit to malfunction.

3. Impact/Shock

Impact or Shock can cause severe damage or break the TC-10U.

4. Electric Devices

Use the TC-10U at least 3ft (1m) away from any electronic devices such as TVs, Radios, PCs, Microwave ovens or any other devices with an electric motors. This may cause the unit to malfunction.

5. Tampering

Any changes or modifications not expressly approved by OPTEx could void the user's authority to operate the equipment.

6. Transmission range

Transmission range may decrease under the following conditions:

- Either TC-10U or receiving unit installed on a metal surface.
- Presence of a steel door, reinforced concrete or other metal obstructions between TC-10U and receiving units.
- Places near strong radio sources such as broadcast stations or substation.

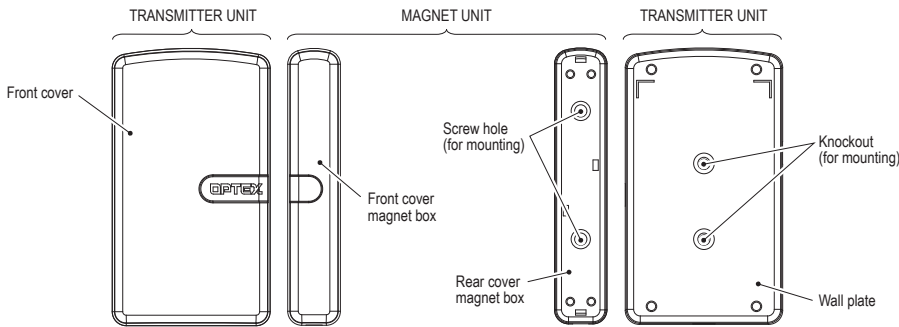
7. Battery replacement

Replace battery every 2 years. Use only CR123 3V lithium battery.

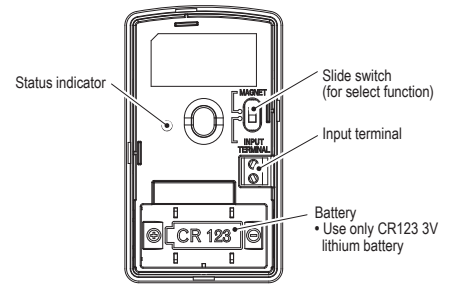
8. Cleaning

Harsh cleaners such as paint removers or benzene may ruin the surface. Use a soft wet cloth and mild soap to clean.

② PARTS IDENTIFICATION



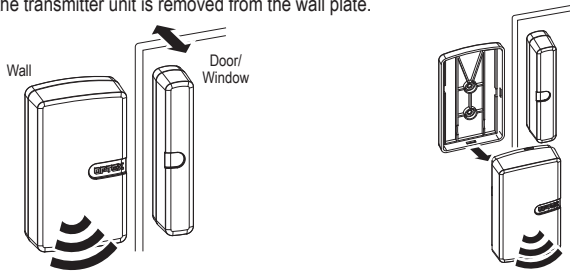
Note: When you recycle this product, please disassemble product and recycle according to state law.



③ OPERATING CONDITION

Transmission signal will be sent when following conditions occur.

When the door opens or when the transmitter unit is removed from the wall plate.



When the distance of the magnet unit is away from the transmitter unit as shown.

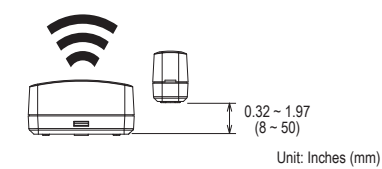
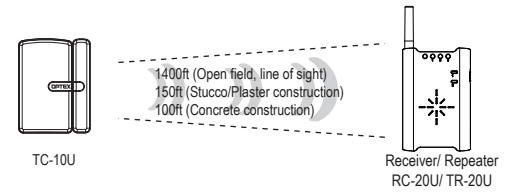


When the distance of the magnet exceeds 1.58 inches as shown.

When the distance of the magnet exceeds 2.36 inches as shown.

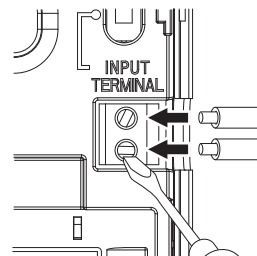
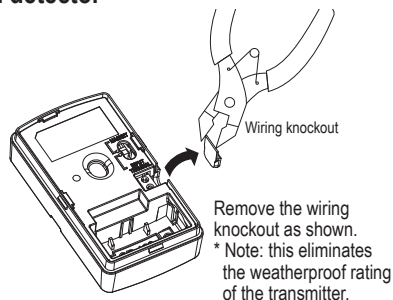
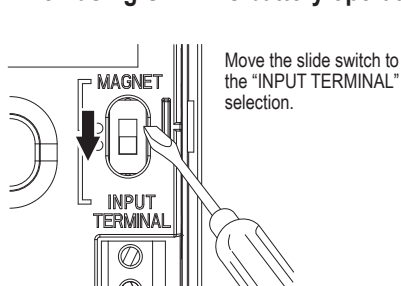
④ TRANSMISSION RANGE (REFERENCE)

Transmission range may change due to the environment. Please check if system functions properly on site. In the case of insufficient transmission range, use TR-20U (Repeater unit) to extend range.



When the distance of the magnet exceeds 1.97 inches as shown.

When using OPTEx's battery operated detector



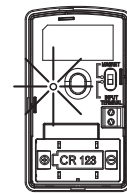
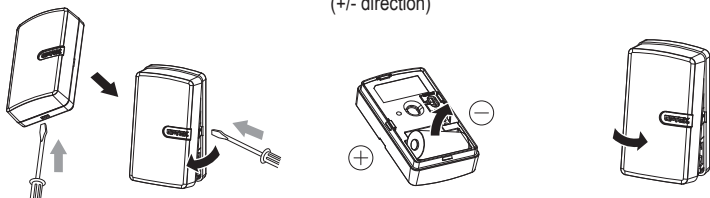
Connect any OPTEx's battery operated detectors to the input terminals.

* The transmitter can be mounted in any OPTEx's battery operated detectors backbox.

* For a complete list of applicable detectors, visit www.optexamerica.com

5 INSTALLATION BATTERY

1. Remove the Front cover as shown.
2. Insert Battery. Observe polarity. (+/- direction)
3. Install the Front cover. Be sure to close securely.



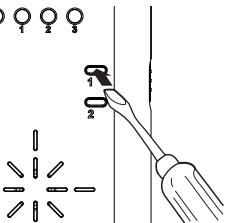
- When the power is low, status indicator starts to flash. Replace the battery in such case even if it is less than a year old.
 - Low power may become the cause of false alarm.
 - There is no need to learn the TC-10U nor the receiver after replacing battery.
- NOTE :** Don't throw the battery in the fire. This may cause the explosion hazard.

6 TEACH TRANSMITTER CODES TO THE RECEIVER

The receiver must be taught this transmitter code before use. Refer to the receiver's manual for details.

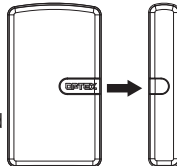
1. Preparation

- Press switch 1 of the receiver until the power indicator starts flashing.
- Press switch 2 to select the zone you wish to assign to the sensor.



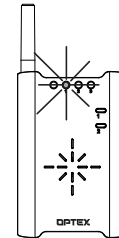
2. Activation

- Separate the magnet unit from transmitter unit.
- Verify that the receiver has learned successfully by observing the zone indicators of the receiver. Zone indicators should have stopped flashing and remain continuously on.



3. Verification

- After teaching all the transmitter codes (if you have multiple transmitters), return the receiver to normal operating status.
- Make sure that the receiver operates correctly with all the transmitters.

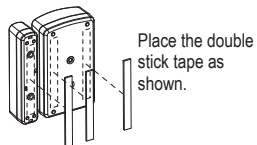


Note:

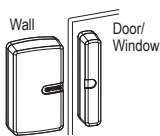
Don't put the magnet unit close to transmitter unit until you are ready to teach the receiver. Unwanted detection can cause the TC-10U to be assigned to the wrong zone and override the data of other transmitters.

7 INSTALLATION

Double stick tape installation



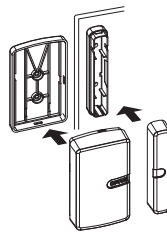
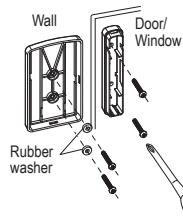
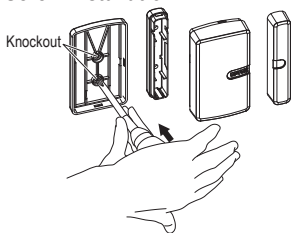
Place the double stick tape as shown.



Clean the installation positions before installing them.
Install the transmitter unit on the wall.
Install the magnet unit on the door or window.

* Align the magnet unit within 0.2 inch (5mm).

Screw installation



Install the back cover.

Install magnet on the door or window with mounting screws.

* Without the use of rubber washers, the unit will lose its weatherproof rating.

* Align the magnet unit within 0.2 inch (5mm).

Put back the cover.

11 TROUBLESHOOTING

1. The system is not operating.

Check the transmitter.

Does the status indicator light up when you remove transmitter unit from wallplate?	→	If not, check to see whether the battery is inserted correctly. Otherwise try a new battery.
Is the status indicator flashing?	→	Is the magnet unit away by enough distance? Please separate it by 2.36 inch (60mm).
Is the status indicator flashing?	→	The battery is old. Replace the battery.

Check the receiver (or repeater).

Is the power indicator of the receiver lit?	→	Is the receiver on? Check the wiring, power switch and connection.
The receiver does not respond to the TC-10U.	→	The TC-10U is not properly recognized by the receiver. Teach the receiver correctly.
The zone indicator of the receiver is on, but nothing happens.	→	The receiver has not been properly setup. Refer to the receiver's manual and verify the setting.
Is there anything blocking the transmission?	→	Relocate the receiver and/or the TC-10U. Metal objects can shorten the effective transmission range.

2. The system is not operating correctly.

It does not transmit.	→	Check if the distance between transmitter unit and magnet unit within 0.2 inch (5mm).
	→	Is the distance between TC-10U and receiver too far? Please use repeater.
Before contacting the supplier!	→	Remove the battery, then reinsert the new batteries and verify the TC-10U's operation again.

• If the above solutions do not work, please contact your supplier for services.

13 COMPLIANCE

FCC ID : DC9TC-10U

The changes or modifications not expressly approved by the OPTEX could void the user's authority to operate the equipment. To comply with the FCC RF exposure compliance requirements, this device and its antenna must not be co-located or operating in conjunction with any other antenna or transmitter. Note: This equipment has been tested and found to comply with the limits for a Class B Digital Device, pursuant to part 15 of the FCC Rules. These limits are designed to provide reasonable protection against harmful interference in a residential installation. This equipment generates, uses and can radiate radio frequency energy and, if not installed and used in accordance with the instruction, may cause harmful interference to radio communication. However, there is no guarantee that interference will not occur in a particular installation. If this equipment does cause harmful interference to radio or television reception, which can be determined by turning the equipment off and on, the user is encouraged to try to correct the interference by one or more of the following measures. (1) Reorient or relocate the receiving antenna. (2) Increase the separation between the equipment and receiver. (3) Connect the equipment into an outlet on a circuit different from that to which the receiver is connected. (4) Consult the dealer or an experienced radio/TV technician for help.

IC : 4012A-00000TC10U

Operation is subject to the following two conditions. (1) This device may not cause interference, and (2) this device must accept any interference, including interference that may cause undesired operation of the device. To reduce potential radio interference to other users, the antenna type and its gain should be so chosen that the equivalent isotropically radiated power (e.i.r.p.) is not more than that permitted for successful communication.

8 CONFIRMATION

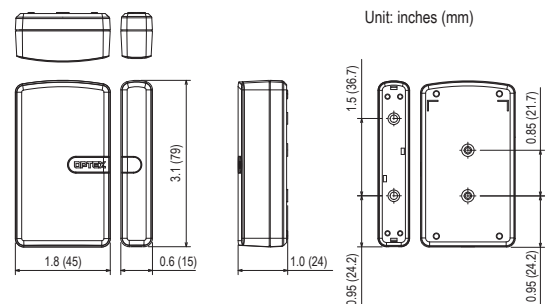
After installation, open and close door/ window and confirm the reception of the transmission signal on the receiver side.

9 SPECIFICATIONS

Model	TC-10U
Description	Door/ Window Transmitter
Status Indicator	Red LED
Power Source	3V: CR123 lithium battery (not include)
Battery Life	Approx. 2 years [100 times per day at 70°F (20°C)]
Frequency	418MHz
Input terminal	Our battery operated detector only
Operating Temp.	15°F ~ 120°F (-10°C ~ +50°C)
Installation Location	Indoor/ Outdoor where don't have rain direct
Accessories	Double Stick Tape x 3, Screw x 4, Rubber Washer x 2
Weight	2.5 oz (70g) (not included battery)

Specifications may change without notice

10 DIMENSIONS



12 WARRANTY

1. This product is warranted under normal use for 1 year from the date of purchase. If the product proves to be defective, return it with a copy of your dated sales receipt for repairs or replacement without charge.
2. The warranty is not applicable when below circumstances will be found:
 - Mechanical or electrical modification(s) are made to the product or it is otherwise altered manually.
 - The product is already been serviced at place(s) other than the manufacturer.
 - It is determined that the product malfunction has resulted from improper use or from an accident.
 - No copy of the dated sales receipt has been submitted together with the product to be serviced.



OPTEX CO., LTD.

(ISO 9001 Certified)
(ISO 14001 Certified)
5-8-12 Ogoto, Otsu, Shiga, 520-0101 Japan
TEL +81(0)77-579-8670
FAX +81(0)77-579-8190
URL <http://www.optex.co.jp/e/>

OPTEX INCORPORATED (USA)

13661 Benson Ave., Bldg.C.Chino, CA 91710 U.S.A.
TEL +1-800-966-783
FAX +1-909-628-5560
LOCAL +1-909-993-5770
URL <http://www.optexamerica.com/>